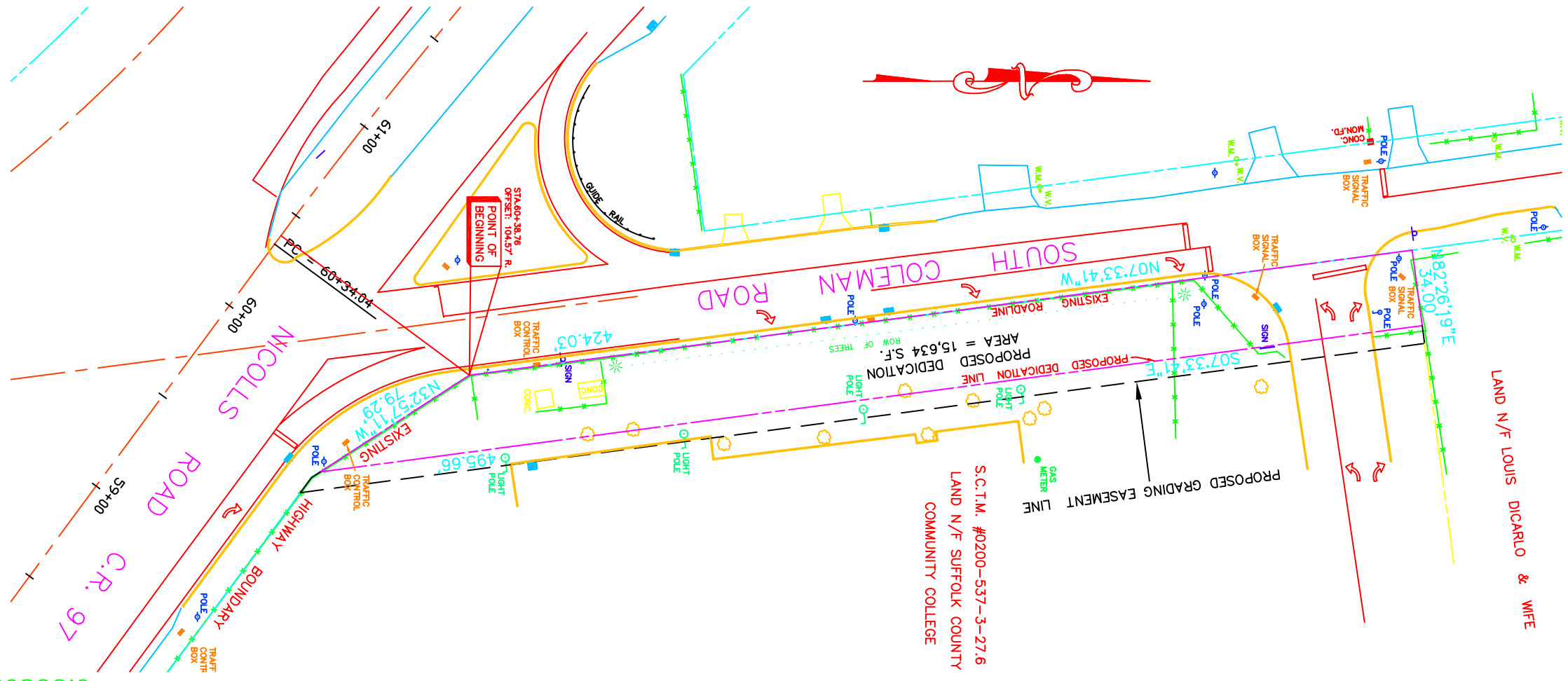


COUNTY OF SUFFOLK
DEPARTMENT OF PUBLIC WORKS
GILBERT ANDERSON, P.E., COMMISSIONER
YAPHANK, NEW YORK

SURVEY SHOWING
PROPERTY TO BE ACQUIRED
FROM
SUFFOLK COUNTY COMMUNITY COLLEGE
(REPUTED OWNER)
FOR ROADWAY IMPROVEMENTS ON
C.R.97 - NICOLLS ROAD
AT
SELDEN
TOWN OF BROOKHAVEN, SUFFOLK COUNTY
NEW YORK
SCALE: 1"=60'

DEDICATION AREA = 15,634± S.F. OR
0.3589± ACRE



S.C.T.M. #0200-537-3-27.6
LAND N/F SUFFOLK COUNTY
COMMUNITY COLLEGE

LAND N/F LOUIS DICARLO & WIFE

REAL PROPERTY
TAX MAP INDEX NUMBER
0200-537.00-03.00-027.006

PRELIMINARY

REVISION:
MADE BY: C.W.
CHECKED BY: W.T.
DRAWN BY: M.D.
COMPARED BY: R.H.

Apr 30, 2007 - 10:36am
C:\cr97 S. Coleman Dunn pdfs (Hillman)\Taking Map\South Coleman Taking Map.dwg\11x17